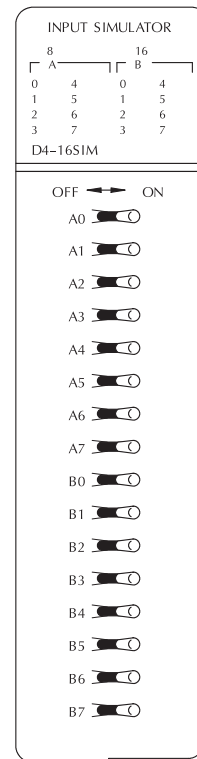
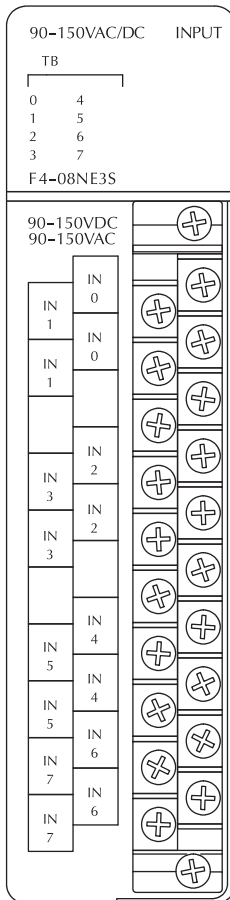
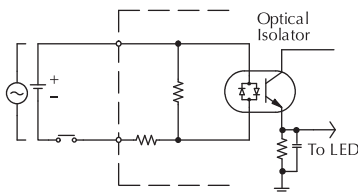
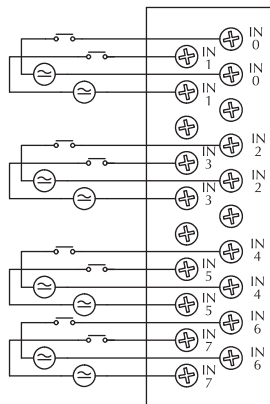
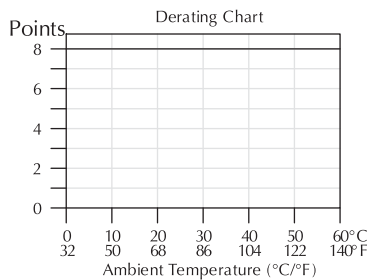


AC/DC Input and Simulator Modules

F4-08NE3S AC/DC Input <-->	
Inputs per Module	8 (sink/source)
Commons per Module	8 (isolated)
Input Voltage Range	90-150VAC/VDC
Peak Voltage	350 peak < 1ms
AC Frequency	47-63Hz
ON Voltage Level	>90VDC/75VAC
OFF Voltage Level	<60VDC/45VAC
Input Impedance	22KΩ
Input Current	5.5mA @ 120V
Minimum ON Current	4mA
Maximum OFF Current	2mA
Base Power Required 5V	90mA max
OFF to ON Response	8ms
ON to OFF Response	15ms
Terminal Type (included)	Removable (D4-16IOCON)
Status Indicators	Logic side
Weight	9oz. (256g)

D4-16SIM Input Simulator <-->	
Inputs per Module	8 or 16 selectable by internal switch
Base Power Required 5V	150mA max
Terminal Type	None
Status Indicators	Logic side
Weight	8.8oz. (250g)
8 or 16 point selection switch is located on the back of the module 8 or 16 point selection is indicated by the LEDs above the input switch status	

See the Terminal Blocks & Wiring Solutions section in this catalog for part numbers of ZIPLink cables and terminal blocks compatible with this module.



- PLC Overview
- DL05/06 PLC
- DL105 PLC
- DL205 PLC
- DL305 PLC
- DL405 PLC**
- Field I/O
- Software
- C-more HMIs
- Other HMI
- AC Drives
- Motors
- Steppers/Servos
- Motor Controls
- Proximity Sensors
- Photo Sensors
- Limit Switches
- Encoders
- Current Sensors
- Pushbuttons/Lights
- Process
- Relays/Timers
- Comm.
- TB's & Wiring
- Power
- Circuit Protection
- Enclosures
- Appendix
- Part Index