

# Magnetic sensor MSK320P

Combined with a magnetic ring (e.g. MR320) the sensor MSK320P establishes a measuring system with extremely robust properties. Areas of use include speed measurement of motors where the system is directly mounted on the driving shaft.



SIKO GmbH

**Address**  
 Weihermattenweg 2  
 79256 Buchenbach

**Telephone**  
 +49 7661 394-0

**Fax**  
 +49 7661 394-388

**E-Mail**  
 info@siko.de  
**Internet**  
 www.siko.de



**Features:**

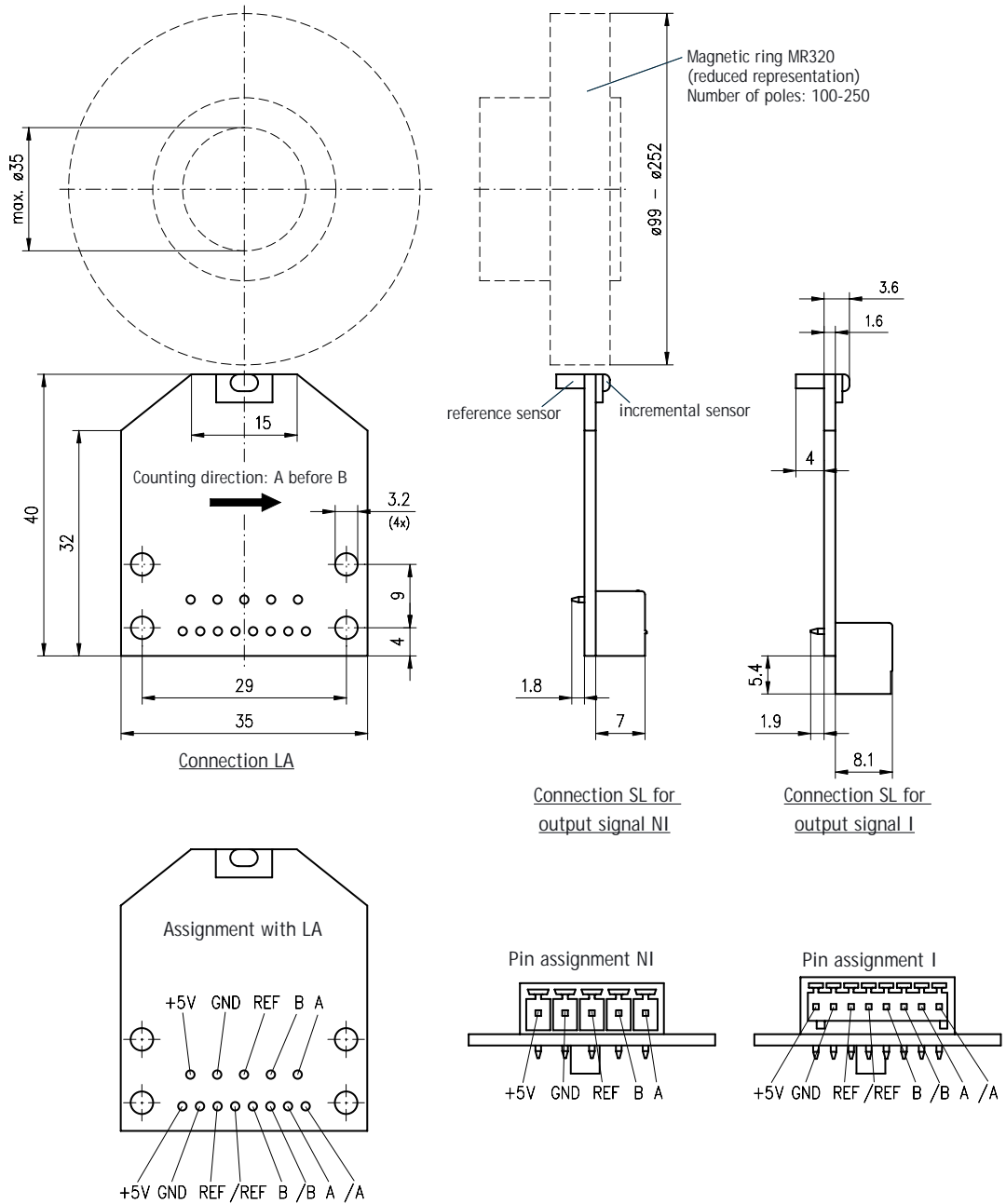
- incremental assembly kit solution
- magnetic, non-contact scanning; completely wearless and robust towards mechanical impact such as shock, vibration, etc.
- very small and compact mounting dimensions
- standard up to 1280 pulses/revolution
- reference signal as an option

Feature	Order text	Additional information
Operating voltage	4	24VDC ±20%
	5	5VDC ±5%
Connection	LA	soldering connection bore
	SL	multi-point connector
Output circuit	PP	push-pull
	LD	line driver
	TTL	
Output signal	NI	not inverted
	I	inverted
Reference signal	0	without
	I	periodic index
	R	reference fixed
Resolution linear/radial scale	0,1/8	
	0,04/20	
	0,05/16	
	0,08/10	
	0,16/5	
	0,2/4	
	0,4/2	reference signal "R" not enabled
	0,8/1	reference signal "R" not enabled

Customer-specific solutions on request.

Your ordering:  -  -  -  -  -  -

# Magnetic sensor MSK320P



Technical data	Additional information
<b>Electrical data:</b>	
Power supply	24VDC ± 20% 5VDC ± 5%
Power consumption	<25mA unloaded
Real-time requirement	real-time signal output
Index mark	every 3,2mm / length 1 increment
Interference protection class	3
Test mark	CE conformity
	only enabled in connection with the complete system
<b>Environmental conditions:</b>	
Working temperature	0°C ... +50°C
Storage temperature	-20°C ... +70°C
Humidity	95% rel.
<b>System data:</b>	
Travel speed	≤5m/s
System accuracy	±[0,1+0,03xL(m)]mm
Repeat accuracy	±1 increment
Sensor/magnetic strip gap	0,1 - 2,0mm <1,0mm
	for reference signal 0 + I for reference signal R